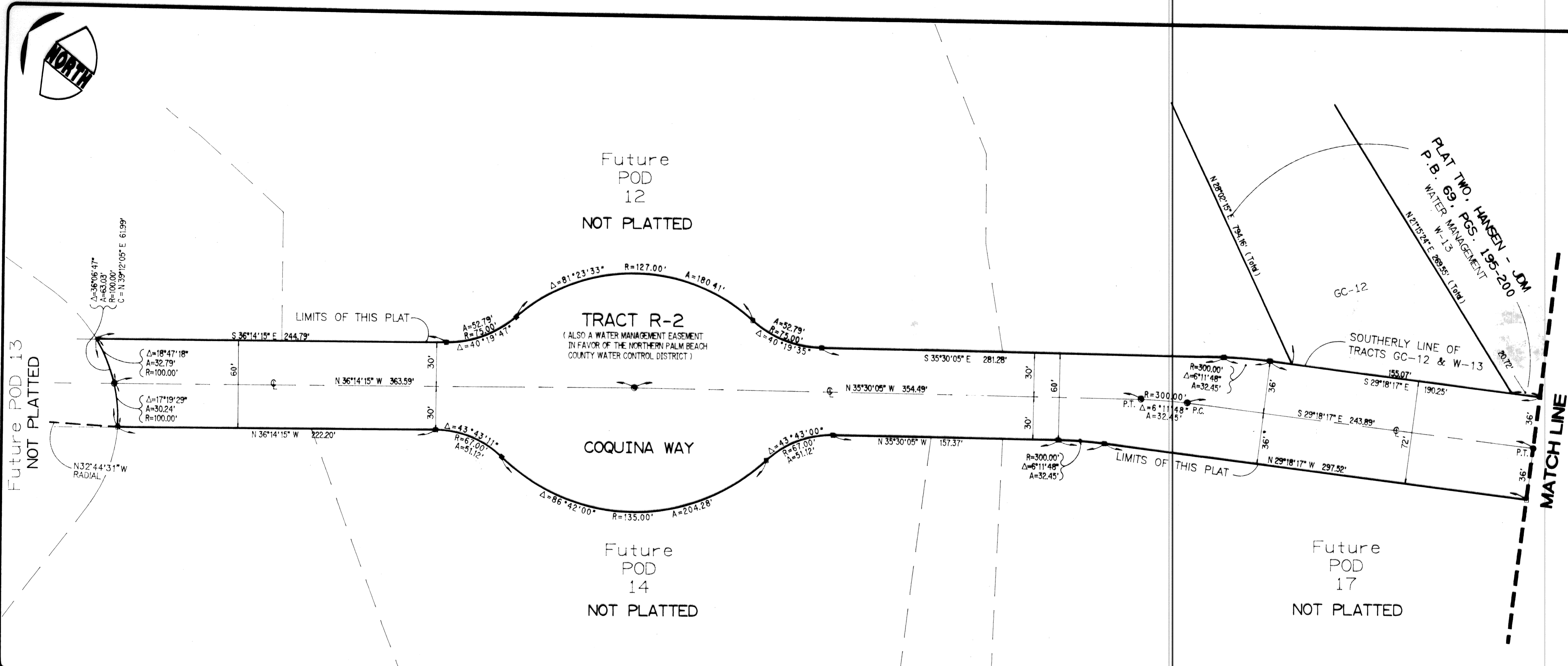


STATE OF FLORIDA }
 COUNTY OF PALM BEACH } SS
 THIS PLAT WAS FILED FOR
 RECORD AT _____ DAY OF
 THIS _____ A.D. 1994 AND
 DULY RECORDED IN PLAT BOOK
 _____ ON PAGES _____ AND
 CIRCUIT COURT.
 BY: _____ DC
 DOROTHY WILKEN, CLERK

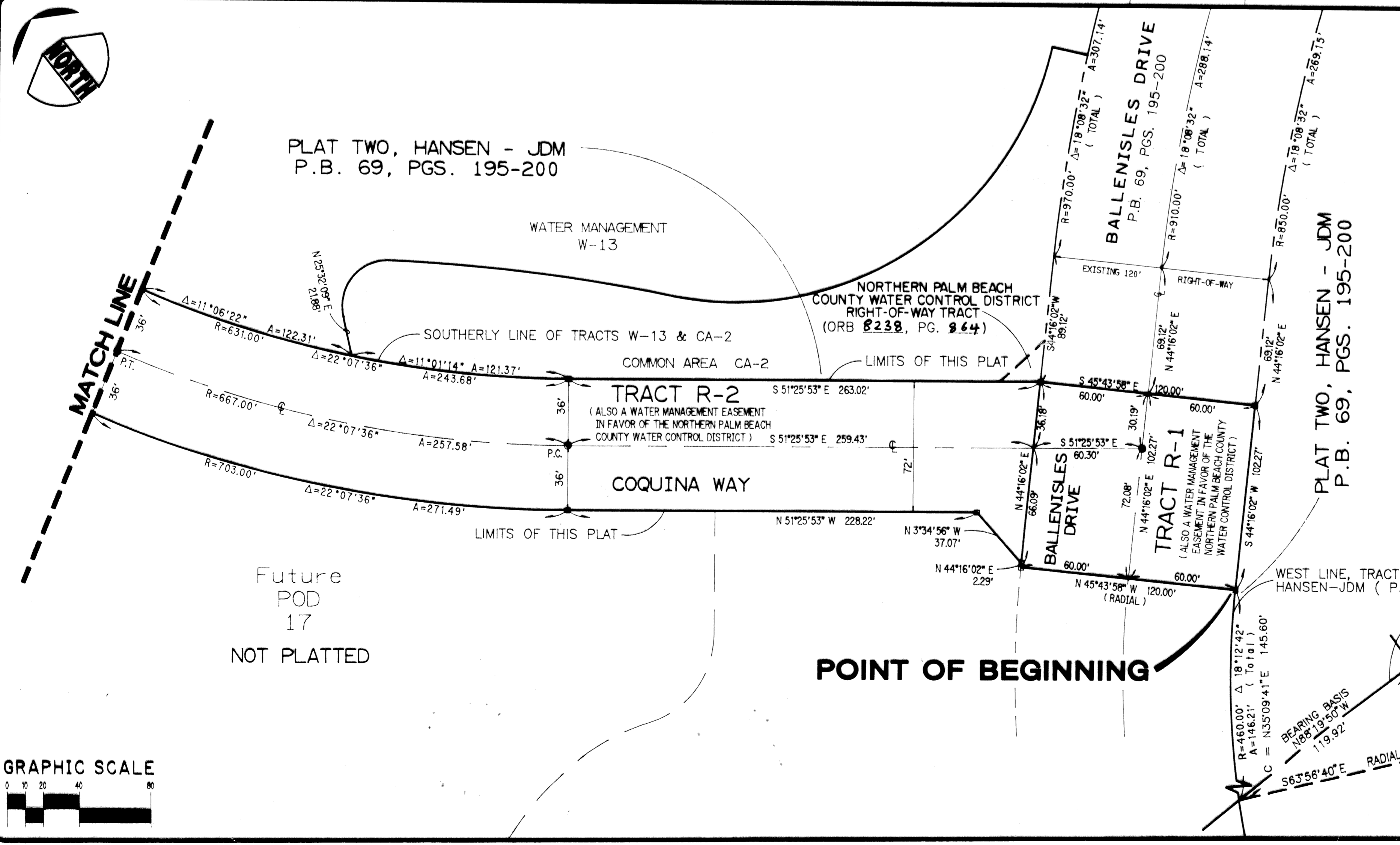


COQUINA WAY at Ballen Isles

BEING A PORTION OF SECTION 14, TOWNSHIP 42 SOUTH, RANGE 42 EAST
 CITY OF PALM BEACH GARDENS PALM BEACH COUNTY, FLORIDA

MAY 1994

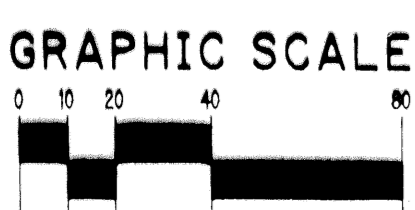
SHEET 2 OF 2



LEGEND

- C = CENTERLINE
- R = RADIUS
- Δ = DELTA
- A = ARC
- CHORD = CHORD
- P.C. = POINT OF CURVATURE
- P.T. = POINT OF TANGENCY
- = SET PERMANENT CONTROL POINT
- = SET 4x4 CONCRETE PERMANENT REFERENCE MONUMENT
- = POINT OF TANGENCY (NOT SET)
- R/W = RIGHT-OF-WAY
- P.B. = PLAT BOOK
- PG. = PAGE(S)
- ORB = OFFICIAL RECORD BOOK

SUBDIVISION # COQUINA WAY
 BOOK 72 PAGE 139
 FLOOD ZONE FLOOD MAP #
 CLAD # ZONING
 SE ZIP CODE
 PUD NAME BALLEN ISLES, C/PALM BEACH GARDENS
 TAB 45



KESHAVARZ & ASSOCIATES, INC.
 THIS INSTRUMENT WAS PREPARED BY RICHARD P. BREITENBACH
 IN THE OFFICES OF KESHAVARZ & ASSOCIATES, INC.
 1280 N. CONGRESS AVENUE, SUITE 206
 WEST PALM BEACH, FLORIDA 33409
 (407) 689-8600 / FAX 689-7476